

# Organogram MSCNN

Department

PI

Staff

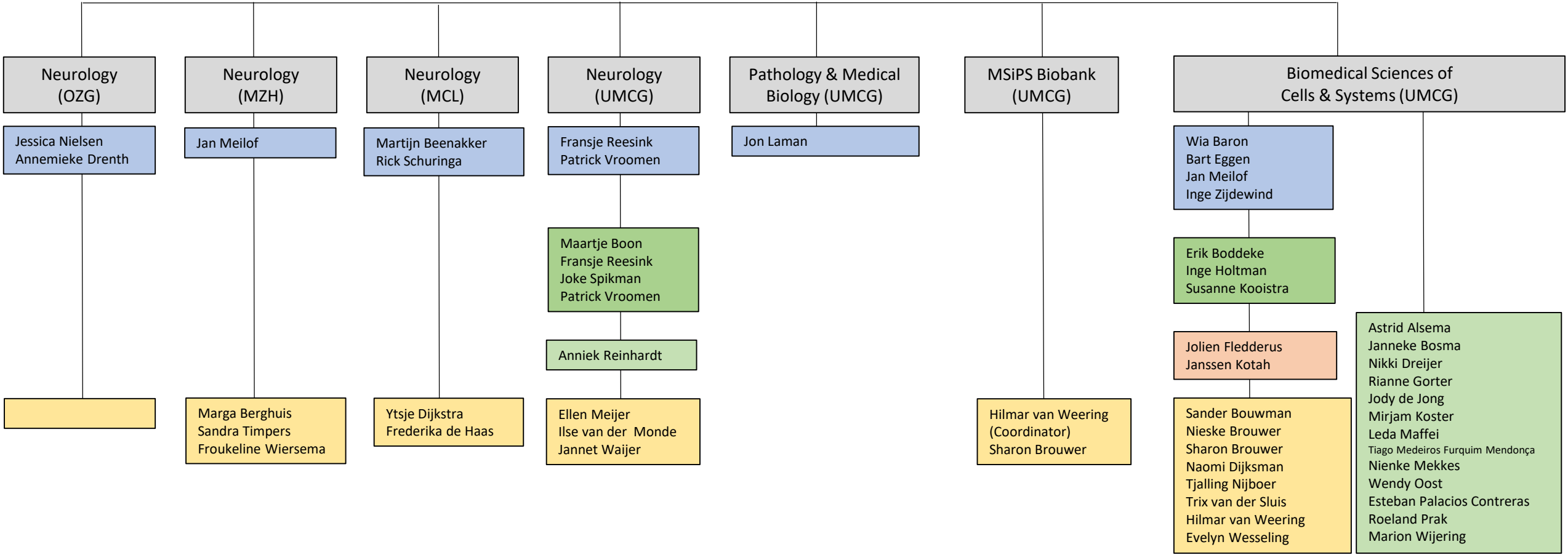
Postdoc

Support

PhD student

**Management team**  
 Jan Meilof, coördinator care  
 Wia Baron, coördinator research  
 vacature  
 Jon Laman  
 Bart Eggen  
 Inge Zijdewind

**Coördinator**  
 Nieske Brouwer



# lokale en regionale interacties MSCNN

CARE
Rehabilitation (UMCG)
Liesbeth Simmelink Francine van Nispen (MZH)
Radiology (UMCG)
Cees de Groot Anouk van der Hoorn
Pediatric Neurology (UMCG)
Maartje Boon
Ophthalmology (UMCG)
Jan Willem Pott
Urology (UMCG)
vacancy

RESEARCH
Genetics (UMCG)
Sebo Withoff Iris Jonkers Aaron Daniel Ramirez-Sanches
Nuclear Medicine and Molecular Imaging (UMCG)
Rudi Dierckx Erik de Vries Janine Doorduyn Kars van der Weijden
Pathology & Medical Biology (UMCG)
Wilfred den Dunnen
Molecular Neurobiology (RuG)
Uli Eisel Valentina Pegoretti
Biomedical Engineering (UMCG)
Inge Zuhorn
ERIBA (UMCG) iPSC CRISPR Facility
Floris Foijer
VISIO Haren/ Psychology (RuG)
Joost Heutink Gera de Haan Fleur van der Feen
Rehabilitation (UMCG)
Liesbeth Simmelink

MS SUPPORT GROUPS
Grunn MoveS
Ard Hofman grunn@moves.ms
MSVN Groningen/Drenthe- Noord
groningen@msvereniging.nl.
MSVN Friesland
friesland@msvereniging.nl